

MANTA  
FUTURE IS FOILING  
FOILS

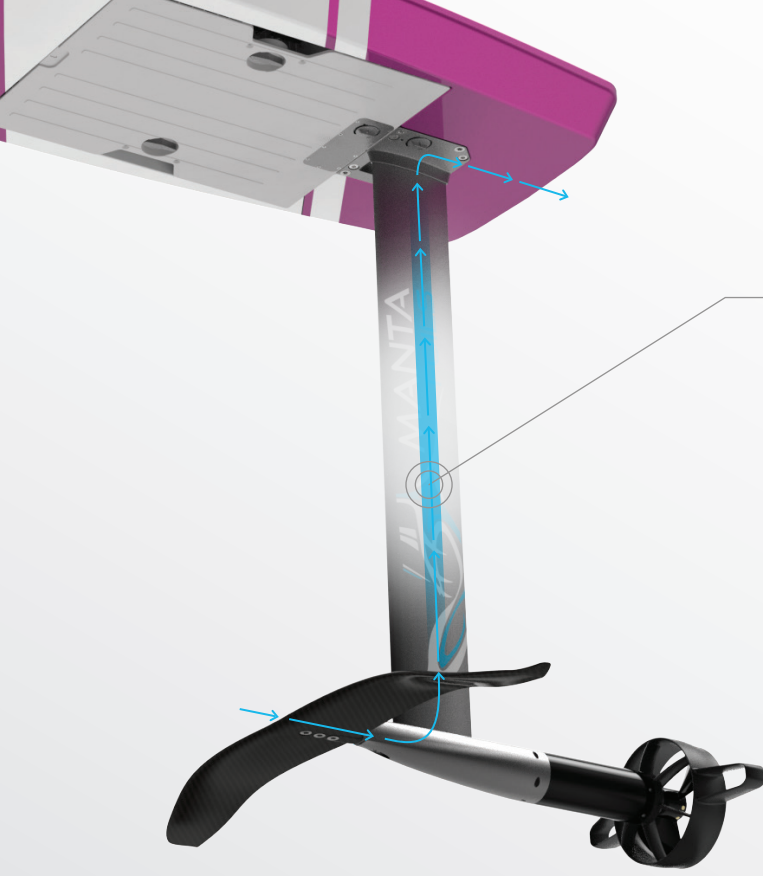
THE  
**VOLT4**  
EFOIL



VOYAGER





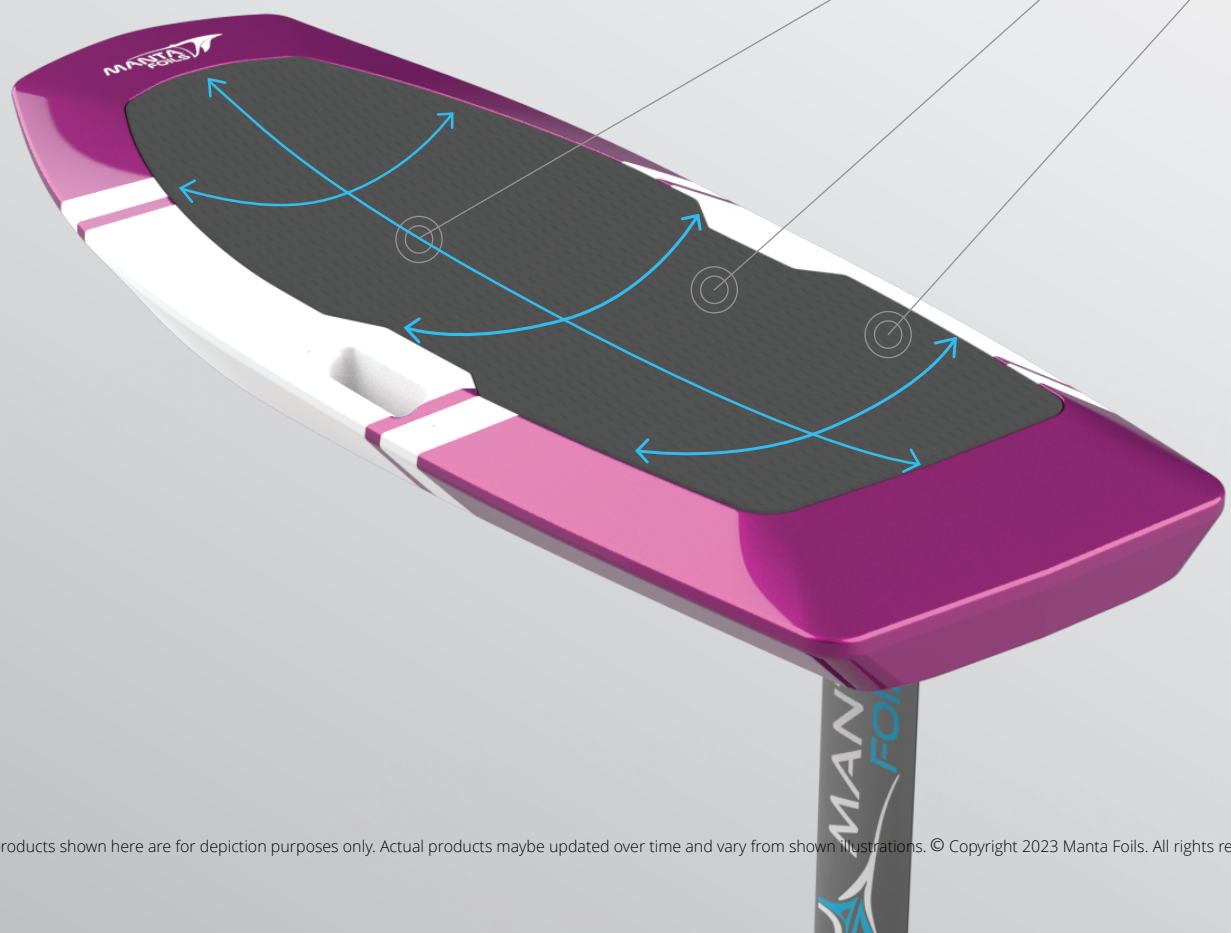


**Water-Cooled Electronics**  
Improved Performance  
Improved Thermal Management

**Improved Grip**  
New Deck Pad Surface

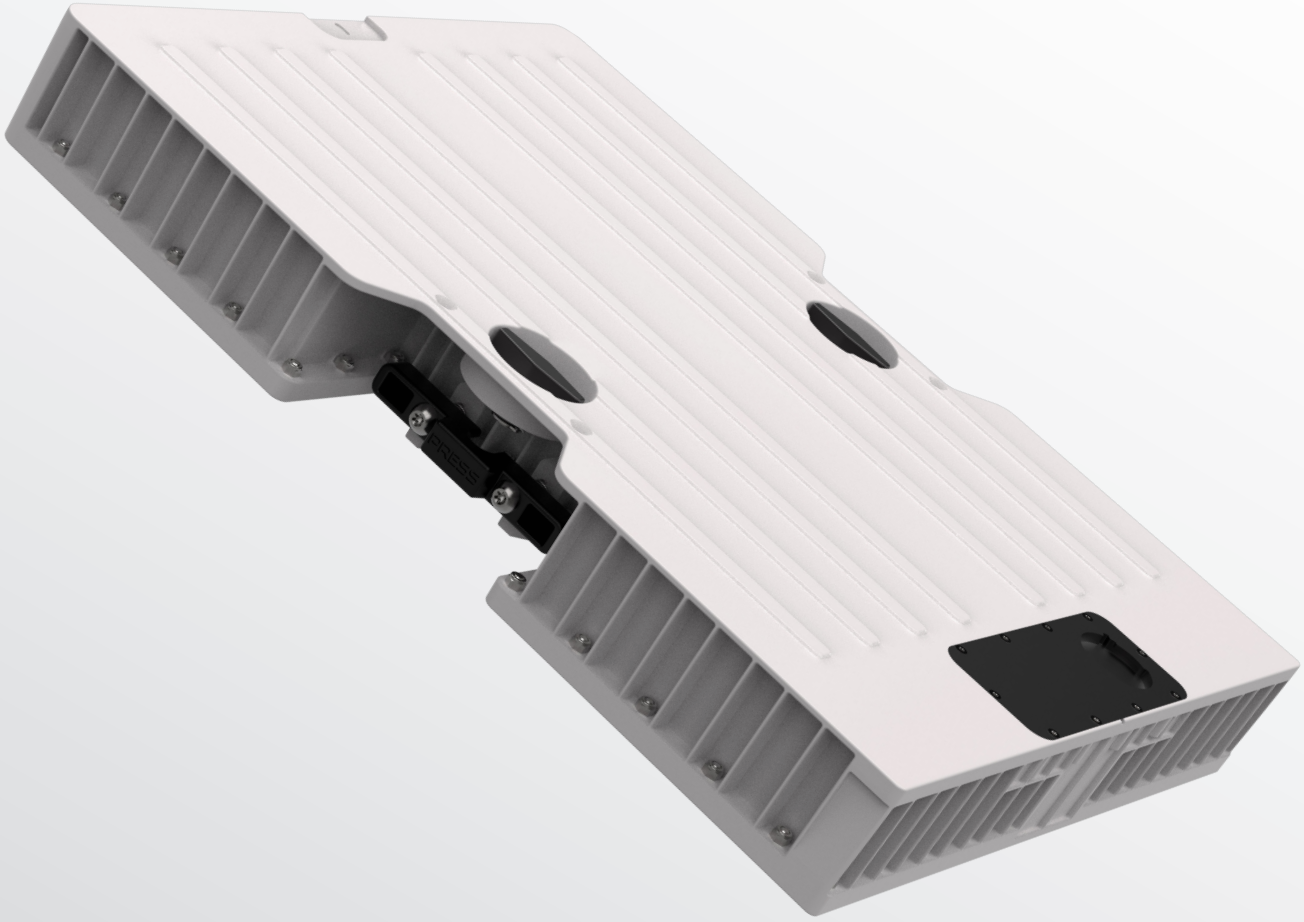
**Clean Deck**  
No Hinges / No Latches

**Improved Board Control**  
3D Concave Deck



## New Battery Design

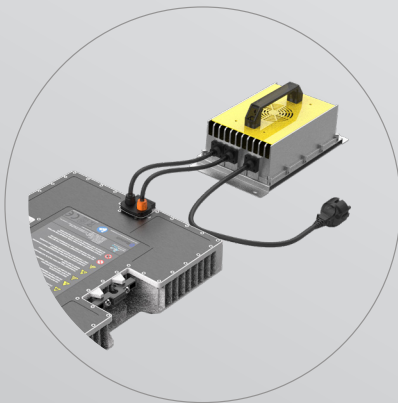
Largest battery on the Market!



180 mins Ride Time



Sleek Design



**Fast Charging**  
2.5 hours



**Dual-seal Protection**



**Battery Monitoring Application**  
Bluetooth Connectivity

### Innovative Battery Design

10x less solder points for improved reliability  
Reduced heat under sun exposure

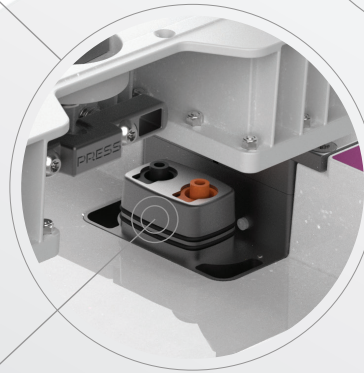
### Quick-Lock Technology

Tool-free installation



### Safety Locks

Spring-loaded safety release mechanism



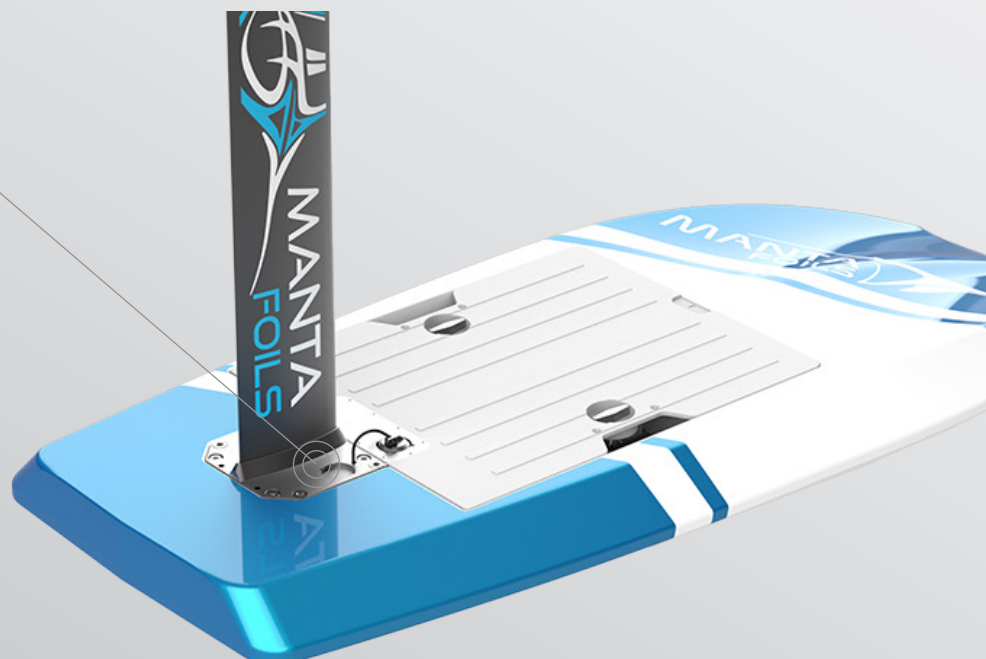
### Power Connectors

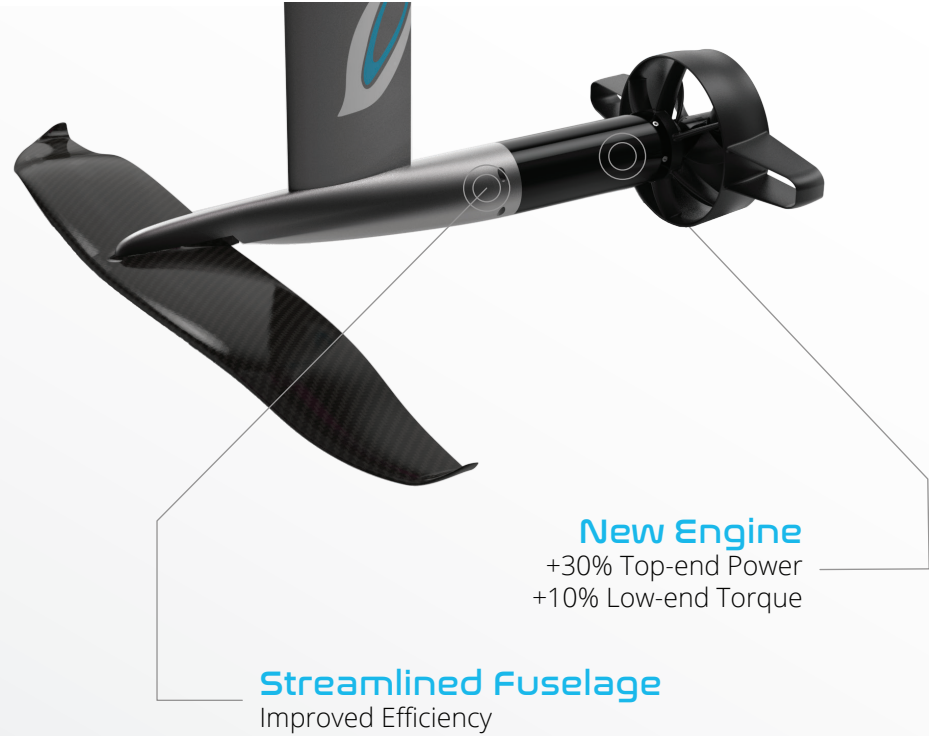
Cable-free power connectors  
Triple seal waterproofing  
Improved reliability



### Magnetic Activation

Board activation via magnet





**Streamlined Fuselage**  
Improved Efficiency

**New Engine**  
+30% Top-end Power  
+10% Low-end Torque

**Manta Prop Guard**  
Innovative Design

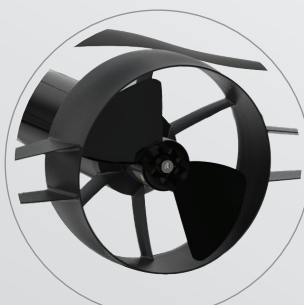


**Surfing Stabilizer**  
Hydrodynamic design  
Reduced drag

**Normal Prop**  
3 Blades  
High Power



**Folding Prop**  
2 Blades  
Increased Efficiency  
Optimized for Surfing



# JET PROPULSION

## Modular Design

Plug-n-play design



## Increased Safety

Fully Ducted Propulsion



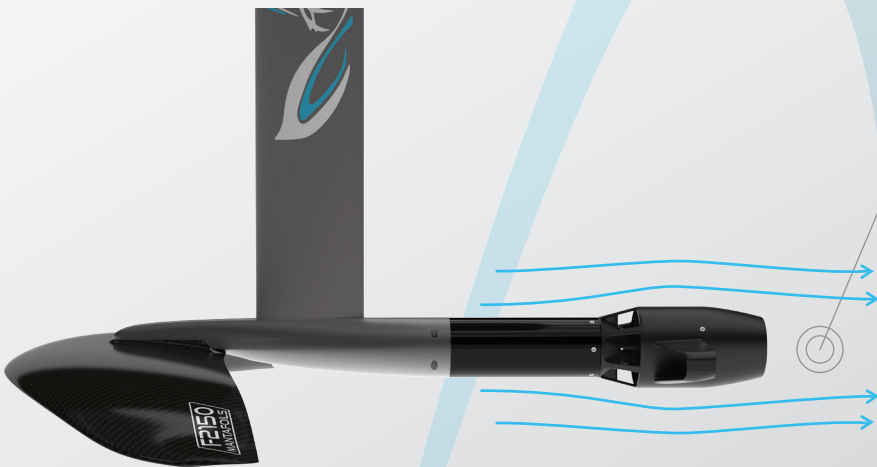
## Efficient

High Efficiency Propulsion



## Smoother Ride

Reduced Drag  
Smooth Throttle Delivery



## Modular Design

Choose between different combinations to match your riding style.



### Discovery

5'11" - 180x79cm (150L)

**Material:** Carbon Fiber Reinforced Composite

**Level:** Beginner / School Riders



### Explore

5'5" - 165x70cm (100L)

**Material:** Carbon Fiber Reinforced Composite

**Level:** Occasional and Heavier Riders



### Elite

4'8" - 142x60cm (75L)

**Material:** Carbon Fiber Reinforced Composite

**Level:** Confirmed Riders



### Absolute

4'4" - 132x56cm (50L)

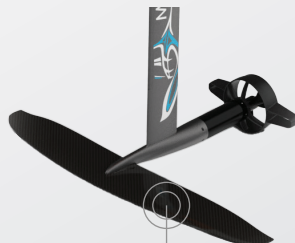
**Material:** Ultra-light Carbon Fiber Prepreg

**Level:** Expert & Light Riders



### Race Wing 800cm<sup>2</sup>

High Speed  
Aggressive Carving



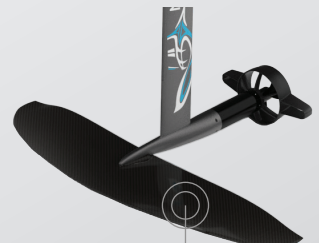
### Glider Wing 1350cm<sup>2</sup>

High Efficiency  
Long Range



### Free Ride Wing 1600cm<sup>2</sup>

All-around Wing  
Smooth Turns



### Lifter Wing 2150cm<sup>2</sup>

Stronger Lift  
Heavy Riders



## Exclusive New Colors & Finishes

Automotive Grade finishes with custom color options are now available!



Lightest eFoil Board at only 5.5 kg

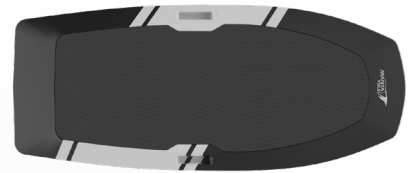
# The Absolute **50L** **CARBON** **FINISH**

## Complete Range of Colors

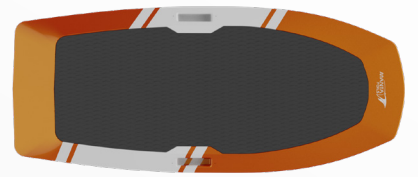
Choose from our wide range of Paints and Finishes.



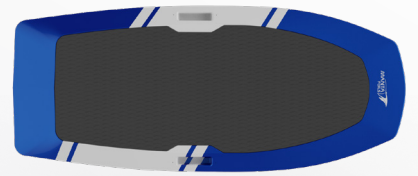
**GUNMETAL**  
MATTE FINISH



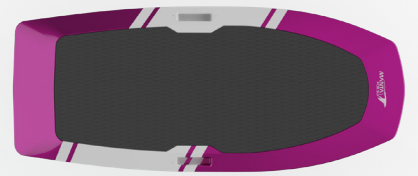
**FIRECRACKER ORANGE**  
METALLIC FINISH



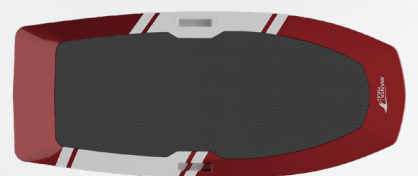
**JET BLUE**  
METALLIC FINISH



**STELLAR PURPLE**  
METALLIC FINISH



**VOLCANO RED**  
METALLIC FINISH



**PHOENIX YELLOW**  
METALLIC FINISH



**GREEN HORNET**  
METALLIC FINISH



## All New Remote Control

Most Advanced Remote Control on an eFoil.



High Res. Display







Soft-click Buttons



High Precision Trigger



-  Wireless Charging
-  Ergonomic Size
-  Logs Recording
-  Dual-core Microprocessor



## BOARD BAG TROLLEY

---

The Manta Foils Board Bag is designed to protect your premium board from unnecessary UV light exposure and to ensure your board stays free from scratches and other damage that may happen during transportation.

Our Board Bag comes with snap-on wheels attachment so you can easily roll your board to the water at the beach

## WING FOIL ADAPTER

---

Never miss a session with our Wingfoil adaptor which is designed to snap in place of the battery

Quickly switch between the eFoil set up or the wingfoil setup and enjoy your foiling sessions to the fullest.



Flying, now for everyone

# VOYAGER



# VOYAGER

Based on the Volt 4 eFoil, the Voyager is a gateway to adventure which makes flying possible for everyone. It has everything great about the Volt 4, and more.



## Session Timer

Ideal for rentals & schools



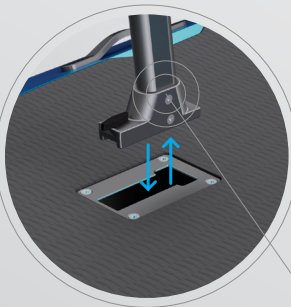
## Kill Switch

Magnetic Activation



## Incredible Stability

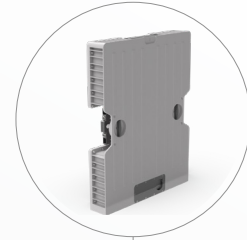
Easy to balance



## 20sec Assembly

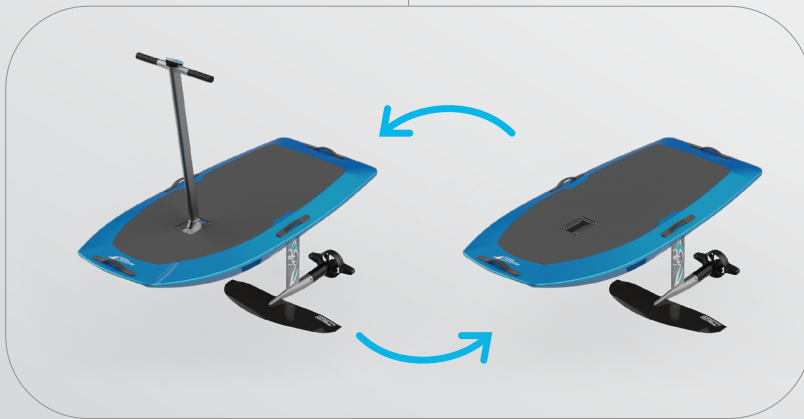
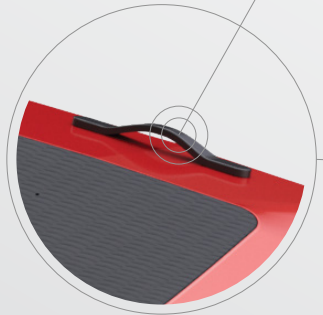
Tool-free installation

**Up to 180 mins Ride Time**  
Long range 50Ah battery



**Clip-in controller**  
Snaps in & out

**Strap Handles**  
Easy carry into the water



**Double the fun**  
Easily switch between  
Voyager & Volt 4

**Carbon Reinforced Fiber**  
Durable & strong build

**Custom Paints**  
Premium metallic finishes



## WARRANTY

Your eFoil package comes standard with a 1 year manufacturer's warranty\*.

---

\*Warranty covers any manufacturing defects in the eFoil and Battery pack for a period of 1 year or 300 cycles; whichever comes first.



### Contact Us

[sales@mantafoils.com](mailto:sales@mantafoils.com)

Ph: +971 58 580 8590

PBU C 49 - Dubai Production City

Dubai - United Arab Emirates

[www.mantafoils.com](http://www.mantafoils.com)